



William Chamberlain, Licensed Landscape Architect
Tel: 302-436-3270 land 302-604-0032 mobile
E-mail: bchamberlain53@gmail.com
Perm Res: 18 South Main Street, Selbyville, DE 19975 USA
 Public Profile <https://www.linkedin.com/in/william-chamberlain-asla-a5285947>

About me:

I am an industrious and inventive Landscape Architectural problem solver with 25 years of experience, impressive portfolio, and global project leadership expertise. Based on a Graduate Level Ivy League Educational background; I have a successful history of directing major planning and built initiatives that significantly improved universities, royal palaces, parks and public realm, resorts, planned communities, and urban corridors both in the United States and the Middle East.

Committed to providing a full array of professional services, team development and management oversight, together with all phases of document preparation for the A&E environment I am adept at working with a wide range of staff and professional stake holders, to provide turn-key landscape architectural design services from concept to construction, achieving maximum quality and value for clients and employers.

Currently:

I am actively seeking the next challenging opportunity. Currently in residence, DE, USA.



Key Proficiencies include:

- Project & Team Management
- Graphics & Design Presentations
- Sustainable Land Use & LEED
- Multidisciplinary Practice
- Staff Development & Motivation
- Digital Practice Media / Software
- Land Planning / Land Development
- Illustration, Fine Arts & History
- Botany, Horticulture
- Client Management
- All Phases CD Development
- Contract Administration
- Urban Design & Planning
- Environmental Oversight
- Regulatory Entitlements
- Positive Mental Attitude
- Written proficiency
- Proven Ability to Multi-task
- Consummate World Traveler
- Entrepreneurial Nature
- Ecological Remediation & Restorations

Employment History:

Integrated Site Design Services, LLC / Delaware, USA

Owner / Principal Landscape Architect / 2005 - Present

ISDS provides a flexible USA based business platform and venue from which I can provide project solutions for Architects, Engineers, Land Planning Clients and other private developers. My services can be contracted by the project, term of service or direct hire.

Omrania and Associates Architects / Riyadh, KSA

Chief Landscape Architect / 2014-2016

Successfully developed and managed the in-office Landscape Architectural Department for a mid-sized, award winning (200 staff) Architectural and Engineering practice in Riyadh, KSA. Duties included all interdisciplinary coordination in-house as well as client contact and staff development.

Continued on next page:



Omrana and Associates Architectscontinued
Notable projects included:

- West Riyadh Metro Complex: two large city blocks in size with a highly articulated elevated public space.
- Modon Community Plan: A mixed-use residential model city with a highly intricate network of public spaces including electric vehicle circulation and invented canyon space linking the communities

KEO International Consultants Doha, Qatar

Director Doha Grand Park / Sept. 2013 to May 2014:

As Director of Doha Grand Park my responsibilities required coordinating landscape architecture, architecture and engineering staff in the development of tender documents package for the 200 hectare new central park for the city of Doha, Qatar. In this role I acted as client liaison in the negotiation with numerous governmental stake holders including City Planning, Utilities Agencies, Department of Transportation, and the newly developing Metro Transit Authority. Successfully represented my client KEO's interest with the Emir's Special Engineering Council and acted as the "lightning rod" resolving complex and difficult balances between client, Emir and KEO's interest.

Saudi Oger, Ltd., Riyadh, KSA / TSSD Engineering

Senior Landscape Architect / Group Leader / 2009 to April 2013

Expertly directed a wide array of complex, large-scale construction and design initiatives with a 6 to 8 person permanent staff in Riyadh and adjunct production staffs in Manila, Philippines and Mumbai, India of ten to twelve each office. Oger was the premiere design / build contractor of its' time in Riyadh with an Engineering and Architecture Department of 7,000 employees embedded within a larger organization of 70,000 employees. Created the Landscape Architecture Group adjunct to Civil Engineering and designed stunning and sustainable sites for royal palaces, universities, hospitality, healthcare, and mixed-use military cities. Developed, trained, and motivated internal and adjunct staff to peak levels of performance. Provided sound reasoning, quality solutions with impressive results meeting budgetary and time-line requirements.

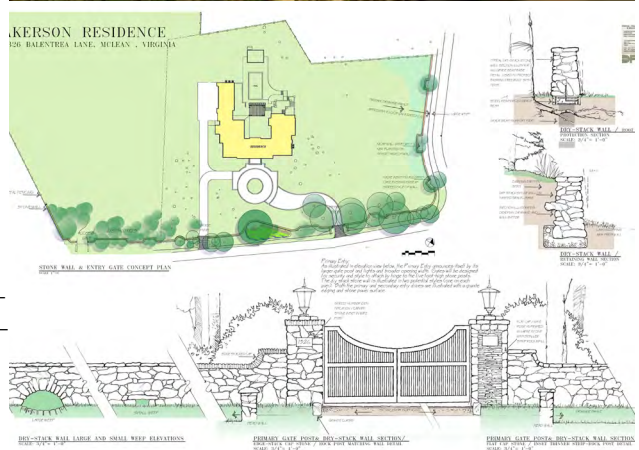
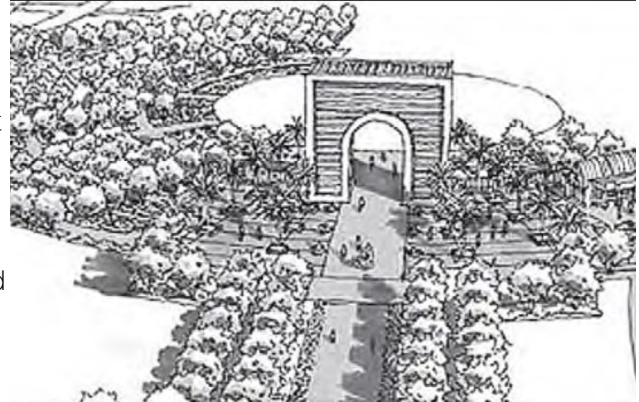
- Successfully managed major planning initiatives such as the Saudi Arabian National Guard (SANG) Military Base with an estimated population of 75,000.
- Recognized as the first American Landscape Architect hired by this international construction company with 70,000 + staff members; served as a trusted member of senior management.

Hyder Consulting Middle East, Abu Dhabi, UAE

Principle Landscape Architect / Project Director / 2008

A short term (7 month) position due to shrinking international financial markets forcing Hyder to close its Middle-east Landscape Architecture Groups in Dubai and Qatar and severely cutting staff in Abu Dhabi.

Managed multiple large-scale private and public sector projects in Dubai and Abu Dhabi. Oversaw public realm design including concept and construction documents preparation. Selected and directed project managers, junior landscape architects, engineering, graphics, horticulture and other global staff. Worked effectively with clients, staff and management while learning and developing new technologies within the department thereby increasing production and upgrading our group's graphic identity.



Chamberlain Consulting, LLC, Selbyville, DE

Land Planner / Landscape Architect | 2005 to 2008

Operated a private practice focusing on land planning and planned community development for a select clientele on Delaware and Maryland Eastern Shore. My practice was involved with land selection, due diligence, environmental assessment, design and document preparation. Regulatory and entitlements negotiation, zoning and community workshops together with presentations on behalf of my clients were customary services as were conceptual studies and the coordination of engineering and architectural consultants.

- Increased lot yield 28% and improved amenities for Millville by the Sea, a development with 9,800 residential units and 500,000 sq. ft. of retail space.

Vista Design, Inc., Showell, MD

Senior Landscape Architect | 2001 to 2005

Vista Design was a relatively new landscape architecturally driven practice in 2001 with a couple of large land planning contracts to their credit when I joined. The following four years was a fast-paced tour involving the myriad of aspects necessary to growing and serving a large list of diverse clients. I was intricately involved with all aspects practice, management, and presentations as the staff grew from four to 25. As a key member I provided concept through final design, client service, and staff management. Evaluation and developed regulatory entitlements packages, zoning studies and adherence to engineering and architectural criteria were also part and parcel to my duties. As the offices primary designer I provided strategic vehicular and pedestrian-way, lot matrix's, recreational facilities, storm water and forest management requirements, wetland delineations, and local regulations, delivered public presentations.

Hunt Engineers, Architects & Land Surveyors, PC, Corning, NY

Landscape Architect / Project Manager / Civil Group | 1998 to 2001

Generated intelligent concept land plans for public schools, athletic facilities, green-ways, and universities. Developed proposals and presentations, prepared contract documents, preformed construction administration on select projects, and effectively managed multiple projects simultaneously.

Oehme Van Sweden, Inc., Washington DC

Mid-Level Landscape Architect | 1997 to 1998

Developed innovative design solutions, water features, and accessory structures for numerous high-end landscapes for this notable office while learning and participating within this fast-paced practice. Produced construction document sets and detailed botanical, aquatic and hard-scape designs as well as presenting progressive design work for the clientele for two of the preeminent landscape architectural designers in the United States.

RTKL, Inc., Washington DC

Junior Landscape Architect | 1995 to 1997

As a member of the "Flagship office" staff this was a wonderful opportunity to participate in several notable and High-profile projects such as Philip Johnson's submission for the Federal Court House, Washington, DC, Palace for King Abdul Aziz Iban Saud, KSA, and the national Capitol Visitors center. During my time at this office I learned many processes and procedures that have aided me throughout subsequent stages of my career growth.



Education:

Masters of Landscape Architecture / MLA 1994

Cornell University / College of Agriculture and Life Sciences

- First professional degree program
- Outstanding Student Teaching Award 1993
- Traveling Study Grant Award 1994
- ASLA Student Design Excellence Award 1994

Bachelors of Fine Arts / BLA 1986

Cornell University / College Architecture, Art & Planning

- Scholarship Student / Cornell Employees Endowment Fund
- Honors

References:

Current references Project List and work samples will be provided upon request

- Omrania & Associates

During his employment with Omrania, we found him to be a sincere and hardworking professional dedicated to his work, and have no hesitation in recommending him for a similar position elsewhere.

We wish him well in all his future endeavors.

Othman Al-Washmi
Partner



omrania


- Hyder Consulting, LTD



Bill was an asset to our team and will be an asset to whatever practice or business activity he is engaged in. I wish him every success in his future.

Should any further information be required, please do not hesitate to contact me.

Yours faithfully



Michael Sandford
Function Leader - Landscape
Hyder Consulting Middle East Limited

